



Site findings from visit to Everite

2014/01/13

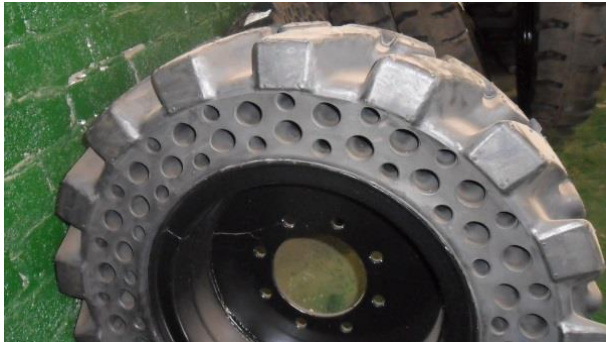
Skid steer Tyres fitted to LS3003



Background

This machine works in the boiler @ Everite .it was fitted with 12" Dirt terrain tyres on the 14/10/2013 on site for the conditions that have been described by the customer. A wheel with overall diameter of 832mm, rim offset 163:67mm and rim size 16"x8"

The McLaren Skid steer tyres have been recommended for the application.



The following facts have been taken into consideration.

- Cushion effect to ensure that the machine is not affected negatively.
- Three to five times the durability than a pneumatic tyre
- The most cost effective solution for the customer.

Fitment

The fitment of these tyres has been done at Everite on instruction of Mr Andre Griesel and have been fitted by myself Deon de Lange along with Mr Rodney Wiggle present.

Serials 50x214 x 12 -0500047317 right hand side front and rear tyres

0500047318

Serials 50 x 215 x 12-0500047420 Left hand side front and rear tyres

0500047416

Visit

Done by myself, Sales Executive, on 2013/01/13 Workshop manager was not present

The machine was called from the boiler by the workshop assistant present and the following was found:



Pic 1 : Showing rear right tyre 46.00mm tread left

Pic 2 : showing front right tyre 46.86mm tread left

Pic 3:showing front left tyre 47.18mm tread left

Pic4:Showing rear left tyre 46.09mm tread left



Pic 5&6 : Shows the surface wear on the tread of the tyre

Pic7: hourmeter on machine on 2014/01/13

Conclusion

The 12" Nu-air Dirt terrain tyre has a tread depth of 50mm when new. This is divided into two phases on the tyre life when measured where the first phase wears only on the lugs and the second phase on the remaining lugs and centre cushion built into the tyre.

The second phase has a 60% longer life due to the contact area that increases

The hours that this machine had when the tyres were fitted on the 2013/10/14 was 166 hours

The hours on the first inspection on the 2013/11/20 was 323 hours

The hours on the machine second inspection on 2014/01/13 was 438 hours

The average tread left on the 2014/01/13 is 46.53mm

These tyres come with a 50 mm tread depth

Therefore there was a 3.4mm wear on these tyres in these conditions over 272 hours

So according to the wear patterns at the moment we can project 3965 hours on this set of tyres

Compiled by

Deon de Lange

F/ M&M TWS : McLaren Tyres