

M&M Tyre and Wheel Solutions (Pty) Ltd

Tyre Report

Customer : M&T Developments

Site : Centurion



Report Compiled by : Morne Muller

## **Background**

The tyres that have been supplied have been for a TLB (2x4) where the experience have been that flats are the biggest problem on these machines.



A CAT 422E TLB Machine have been fitted. 4623 hrs

The downtime has been an issue as well as the overall durability on the tyre compared to a pneumatic.

On the pneumatic the durability proved to be in the region of 600 to 800 hrs.

## **Site visit**

The site has been visited by Deon De Lange – Sales Executives M&M TWS on 2014/01/08 with Gerhard Mulder, Tyre maintenance for M&T Developments.

The machine was found working where the operator reported a comfortable and stable operating ride in the machine.

## Measurements.



On the Hour reading on the machine we have 4830.2 hrs



Left side 47.14 mm



Right side 46.69 mm

Starting off at 50mm (3mm) tread have been used within 207hrs

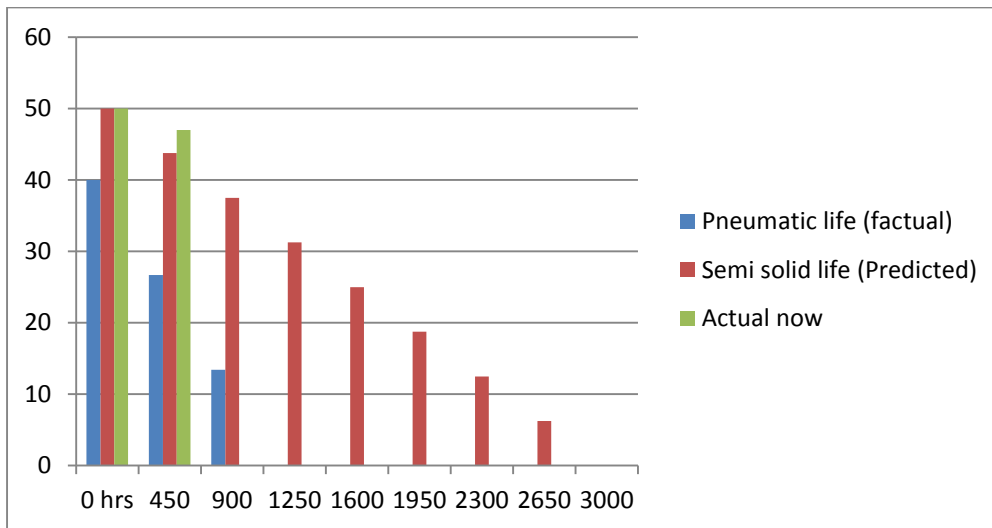
Facts from the tyre is that a) this is in the first phase of wear and b) the rubber can be used past the tread line to at least the first row of apertures.

The prediction on these tyres is that they will do 3448.62 hrs on the way that they are currently wearing.

## Conclusion

From measurements that have been taken on two incidents in have been seen that the tyres have a even wear.

They should get the predicted hours.



Graph starts with New Tread depth (50mm) on Zero hrs

Assumptions have been made that the pneumatic tyre has a tread depth of 40mm vs 50mm on the NU Air. Also that the maximum durability on the pneumatic would be 1200hrs with the problems of a pneumatic.

**We are proud to supply you with the best in Africa!**