



Tyre report from visit to Sasolwax

2013/11/07

Semi solid Tyres fitted to Cat skid steers

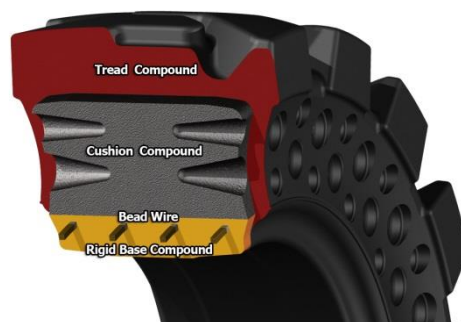


## Background

These semi solid tyres were fitted to the Cat skid steers at Sasolwax

These machines are Cat 246 models and had been fitted with 12" all terrain tyres in a concrete and solid underfoot conditions

The McLaren dirt terrain 12 x 16.5 Skid steer tyres have been recommended for the application.



The following facts have been taken into consideration.


- Cushion effect to ensure that the machine is not affected negatively.
- Three to five times the durability than a pneumatic tyre
- The most cost effective solution for the customer.

## Fitment

The fitment of the tyres has been done on site in Sasolburg.

Serials

128 14<sup>th</sup> Avenue  
Anderbolt  
Boksburg  
Email: [morne@mmtws.co.za](mailto:morne@mmtws.co.za)



M&M Tyre and Wheel Solutions (Pty) Ltd  
Reg nr 2012/209203/07  
VAT 4070262136  
Import/Export Code 21319077

**Delivery Note:**

1 October 2013

**Group 5 / Sasol Wax**

<u>Tyre size</u>	<u>Serial Number</u>	<u>Quantity</u>
50x214x12	7213 LS 4001	1
50x214x12	7222 LS 4001	1
50x214x12	7232 LS 3010	1
50x214x12	7233 LS 3010	1
50x215x12	7237 LS 4001	1
50x215x12	7238 LS 4001	1
50x215x12	7239 LS 3010	1
50x215x12	7248 LS 3010	1
		<b><u>Total 8</u></b>

All Tyres are delivered in good condition.

LS 3010 Hours 4120.8  
LS 4001 Hours 23328.5

-----  
Deon De Lange

-----  
Customer Signature

LS 2004  
6080 HRS.

Visit

Done by myself, Deon De Lange – Sales Executive, on 2013/11/07 on site.

Both machines , fleet number LS4001 and LS3010 tyres were inspected and the following wear was found on the mentioned plant

LS3010



Pic 1 : Front left tyre 45.37mm tread left

Pic 2 : Rear left tyre 45.37mm tread left

Pic 3 :front right tyre 46.73mm tread left

Pic 4 :Rear right tyre 47.43mm tread left

Hours on the machine 4202

LS4001



Pic 1 : Front left tyre 46.74mm tread left

Pic 2 : Rear left tyre 47.35mm tread left

Pic 3 :front right tyre 46.72mm tread left

Pic 4 :Rear right tyre 46.96 mm tread left

Hours on machine 23447

## Conclusion

The 12" Nu-air Dirt terrain tyre has a tread depth of 50mm when new. This is divided into two phases on the tyre life when measured where the first phase wears only on the lugs and the second phase on the remaining lugs and centre cushion built into the tyre.

The second phase has a 60% longer life due to the contact area that increases.

Fleet number LS3010 has worked 82 hours and has an average wear on all four tyres of 3.77mm ,therefore should this trend continue on the first phase of wear then a predicted 1087 hours can be expected from these tyres ,however once it reaches the second phase of wear on the lugs and centre cushion these numbers will double ,but this will reflect itself as the tyre wears

Fleet number LS4001 has worked 119 hours and has an average wear on all four tyres of 3.05mm,therefore should this trend continue on the wear rates above then a predicted 1700 hours can be expected from this set of tyres in this application

LS2004





Pic 1 :LS2004 fleet number with tyre conditions

Pic 2 : close up of tyre wear of LS2004

PIC 3:4:5:6: Serial numbers of the tyres fitted on LS2004

These tyres were fitted approximately 3 years ago to this machine ,the hours on this machine was 4460 when the tyres were fitted ,unfortunately this machine was not available on this site visit however the hours taken on this machine was 6080 when the tyres for LS4001 and LS3010 were fitted ,to date then the machine has worked 1620 hours on this set of tyres

If we take the average between the two other machines then this machine would have been on approximately 1720 hours on this set

As you can see on the pictures above there is still 50 % of the tread life left on this machine ,which shows that the second phase of tyre wear offer a lot more hours than the first phase as mentioned in the report above on LS4010

This report was compiled by

Deon de Lange

Sales Executive

M&M Tyre and wheel solutions