



On-Site findings from visit to Group 5
Date: 2014/07/03
Machine Type: CAT
Tyres Supplied: **Skid Steer solid cushion tyre**
 (10")



Executive Summary

Client	Group 5		
Client Manager + Position	Gawie Nel		
Workshop on site	Jan Venter		
MMTWS Sales Support	Leonette Kriek 011 894 4471		
Date of Visit	2014/07/03		
Machine Type	CAT		
Fleet Number of Machine	LS2004		
Description of Tyres Fitted:	Skid steer solid cushion (10")		
Application (Mining / Construction / Agriculture)	Construction		
Site Conditions	Construction/Gravel/Wax/Mud		
Date Tyres fitted	September 2011		
Cost of Tyres	R6500.00		
No of hours worked	Machine hours at date fitted:	4460	Hours to date 2405hrs
	Machine hours at site visit:	6865	
Tyre wear to date from 40mm originally.	Front – right		19.27mm
	Rear – right		19.60mm
	Front – left		19.15mm
	Rear – left		19.89mm
	Average		19.59mm
Projected hours to 40mm Treadline based on usage to date	2800hrs		
Note: Initially wear will be faster as the tread width is broader as the tyre becomes older			
Projected hours below Treadline Note this is Bonus hours which we expect and have not been included in the Projected Hours calc above	100		
Manufacturers Projection under similar conditions to Group 5(SASOL WAX)	950-2100		

REPORT

1. Background

The machine works in Dirt Terrain on Group 5. In deciding which tyres should be used for this clients requirements, the following was taken into consideration –

- Cushion effect to ensure that the machine was not negatively affected;
- The MMTWS was estimating a three to five times durability in comparison to a pneumatic tyre; and
- The proposition would be the most cost effective solution for the customer.

The Solid cushion tyres were recommended for this application.

The machine was fitted with 10” solid cushion tyres. The wheels had an overall diameter of 830mm. Rim off set 168:66mm and rim size 16”x8”. The serial numbers of the tyres are as follows –

- 50x114x10 - 0500042367 and 0500042379 for the right hand side front and rear tyres; and
- 50x115x10 - 0500042399 and 0500042387 for the left hand side front and rear tyres.



Cushion effect to ensure machine is not negative affected.



Second phase in the life of the tyre provides an extra 60% longer life.

2. Details of the site visit

The visit was conducted by Jonathan Loots, MMTWS Sales Support on 2014/07/03. The workshop representative on site (Gawie Nel). The machine was visited on site and measurements were taken.

3. Fitment

The fitment of the tyres was done on site at Group 5 on instruction from Andre Griesel. The fitment was done by MMTWS

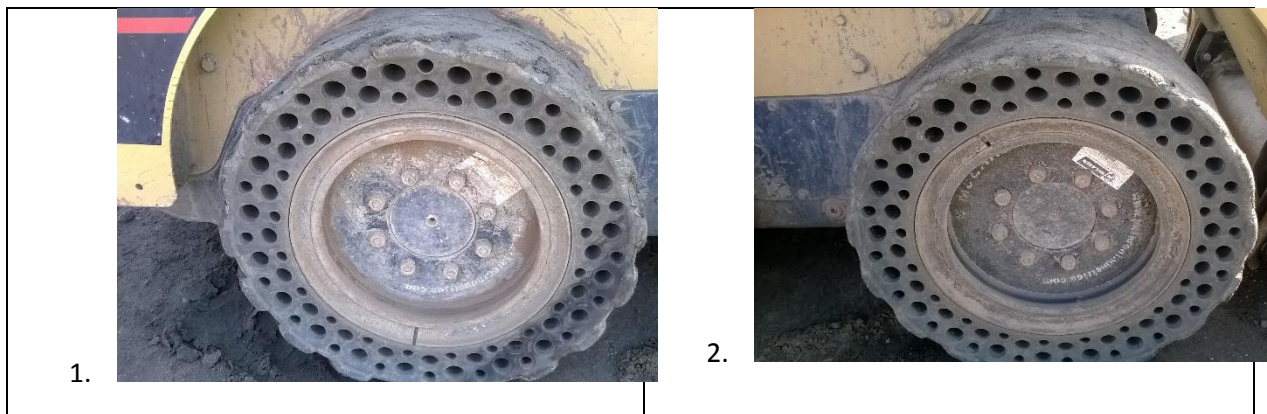
4. Measurements




The following measurements were established –

- Rear right tyre 19.60mm tread left
- Front right tyre 19.27mm tread left
- Front left tyre 19.15mm tread left
- Rear left tyre 19.89mm tread left

The average tread left on the tyres on 2014/07/03 was 19.59mm.

5. Photo Gallery



 <p>3.</p>	 <p>4.</p>
 <p>5.</p>	
<p>Pic 1: Showing rear right tyre 19.60mm tread left Pic 2: Showing front right tyre 19.27mm tread left Pic 3: Showing front left tyre 19.15mm tread left Pic4: Showing rear left tyre 19.89mm tread left Pic 5: Hour meter on machine – 2014/07/03</p>	

6. Conclusion

The 10" Solid cushion tyre had a tread depth of 50mm when new. There was an average of 38.00mm wear on the tyres over a 2405 hour period. Therefore, according to the wear patterns being demonstrated, a total of hours exceeding 2800hrs are projected on this set of tyres. There are two phases in the life of the tyre. The first phase wears only on the lugs and the second phase wears on the remaining lugs and centre cushion built into the tyre. The second phase provides a 60% longer life because there is an increase in the contact area.

Sales and Technical support contact Leonette 011 894 4471